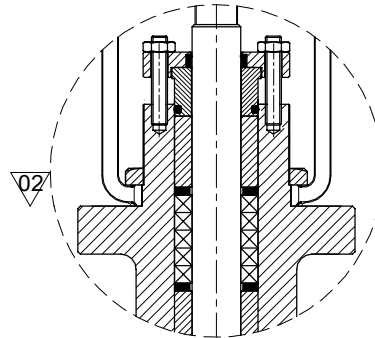
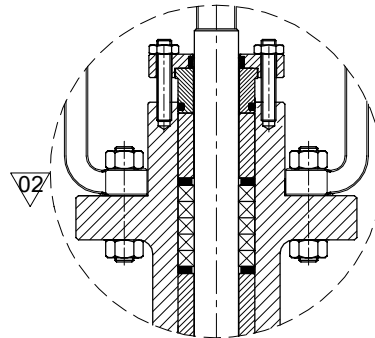


CONTROL VALVE
MODEL: GCV - B - EC

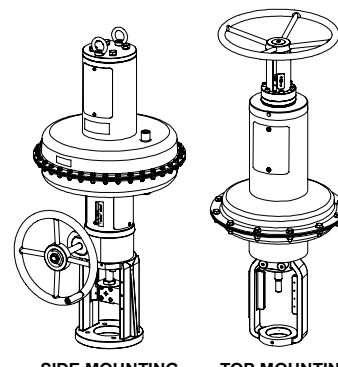
ON-OFF VALVE
MODEL: CBGL-EC-O-F



ACTUATOR MOUNTING WITH LOCK NUT

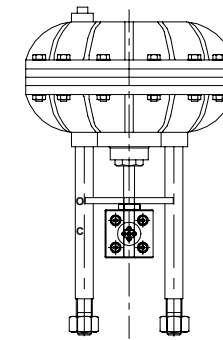


ACTUATOR MOUNTING WITH STUD AND NUTS



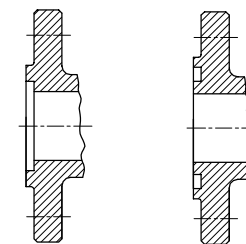
ACTUATOR WITH OPTIONAL HANDWHEEL

OPTIONAL ACTUATOR TYPE



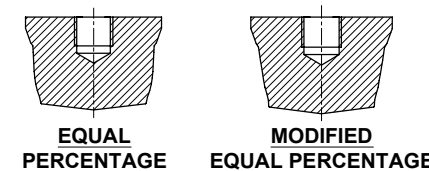
PNEUMATIC ACTUATOR WITH PILLAR TYPE

OPTIONAL VALVE ENDS

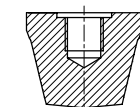


SMALL TONGUE **SMALL GROOVE**
(OTHER END CONNECTION AVAILABLE AS PER REQUIREMENT)

OPTIONAL PLUG TYPES



EQUAL PERCENTAGE **MODIFIED EQUAL PERCENTAGE**



LINEAR TYPE

REV	REV DATE	DETAILS	APPROVED BY
01	29-01-2020	CHANGES MENTIONED 01	PRADHIP G
02	05-06-2020	CHANGES MENTIONED 02	PRADHIP G
03	10-11-2020	CHANGES MENTIONED 03	PRADHIP G
04	21-12-2020	PISTON TYPE ACTUATOR REMOVED	PRADHIP G
05	19-02-2026	CHANGES MENTIONED 05	HARISH

DIMENSIONAL DETAILS:

DN	25	40	50	80	100	150
ØD	115	150	165	200	235	300
ØP	85	110	125	160	190	250
ØR	68	88	102	138	162	218
T	18	18	20	24	24	28
t	2	3	3	3	3	3
K	4/Ø14	4/Ø18	4/Ø18	8/Ø18	8/Ø22	8/Ø26
L	160	200	230	310	350	480
Body & Bonnet Thickness (min)	7.0	8.0	9.0	10.5	12.0	14.5

23	GLAND STUD / NUT	ASTM - A 320 Gr.L7 / L7M / A 194 Gr.7 / 7M
22	INTEGRAL SEAT	ASTM - A 352 Gr. LCC / LCB + STELLITED
21	STEM NUT	ASTM - 316L / HASTELLOY / MONEL / DUPLEX S31803
20	GUIDE BUSH	HASTELLOY - C 276 / MONEL / 316L
19	CAGE	ASTM -316L / 316 /MONEL / HASTELLOY
18	SEAT RING	ASTM - 316L / 316 / MONEL / LF2 HASTELLOY + STELLITED
17	CYLINDER	ASTM - A 352 Gr. LCC / LCB
16	ACTUATOR	REFER NOTE (" k ")
15	FASTENERS	ASTM - A 320 Gr.L7 / L7M / A 194 Gr.7 / 7M
14	GASKET	SPW - SS 316L/316 + PTFE/MONEL+PTFE
13	PACKINGS	PTFE
12	GLAND FLANGE	ASTM - 304 / A 351 Gr.CF8 / A 352 Gr. LCC / A 352 Gr. LCB / A 350 Gr.LF2
11	GLAND BUSH	ASTM - A 276 TYPE 316L / A 351 Gr.CF3M / 316 / A351 Gr.CF8M / HASTELLOY / MONEL
10	SPACER	HASTELLOY - C 276 / MONEL / 316L
9	GLAND RING	HASTELLOY - C 276 / MONEL / 316L
8	LOWER GUIDE	HASTELLOY - C 276 / MONEL / 316L
7	TOP COLLAR	HASTELLOY C 276
6	STEM	ASTM - TYPE 316L / 316 / MONEL / HASTELLOY / DUPLEX S31803
5	BELLOW	HASTELLOY C276
4	BELLOW COLLAR	HASTELLOY C 276
3	PLUG	ASTM - A 350 Gr.LF2 / A 351 Gr. CF8M / CF3M HASTELLOY / MONEL / 316L / 316 / ASTM - A 352 Gr. LCC / LCB
2	BONNET	ASTM - A 352 Gr. LCC / LCB
1	BODY	ASTM - A 352 Gr. LCC / LCB

Sr.No	PARTS	MATERIAL OF CONSTRUCTION
-------	-------	--------------------------

CLASS - PN 40

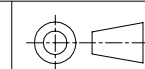
GLOBE BELLOW SEAL CONTROL & ON-OFF VALVE

DRG NO.:

BOS-S-19172 REV 05

NOTE:-

- VALVE DESIGNED AS PER EURO-CHLOR GEST 17 / 492
- APPLICATION SHALL BE LIQUID CHLORINE & DRY GASEOUS CHLORINE
- VALVE FACE TO FACE EN 558 / ASME B16.10 / ISA 75.08.01
- FLANGED END TO ASME B 16.5 / EN1092-1 WITH RAISED FACE SERRATED FINISH
- TESTING AS PER EN 12266-1 / GEST 17/492 / ISA 75.19
- INLET AND OUTLET FLANGES SECURELY BOLTED WITH BLANK FLANGES AND FITTED WITH SUITABLE GASKETS
- OPTIONAL OTHER GRADES OF MATERIAL AVAILABLE (BASED ON PRESSURE, TEMPERATURE AND MEDIA) WHEN REQUESTED AS PER EURO CHLOR GEST 79/82
- DIFFERENT TYPE OF FLANGE FACING AVAILABLE AS PER REQUIREMENT
- OPTIONAL OTHER RATING AND OTHER VALVE SIZE AVAILABLE AS PER CUSTOMER REQUIREMENT
- DRAIN TAPPINGS IN THE BODY ARE NOT PERMITTED
- PNEUMATIC ACTUATOR USED ALONG WITH ACCESSORIES LIKE AFR, POSITIONER, SOLENOID VALVE & LIMIT SWITCHES
- OTHER TYPES OF ACTUATORS AVAILABLE AS PER CUSTOMER REQUIREMENT
- PLUG SHALL BE STELLITED AS PER CUSTOMER REQUIREMENT



ALL DIMENSIONS ARE IN MM

IF IN DOUBT. ASK...

SCALE N.T.S.

APPD.	P.G	Pradhip G
DT.	08.05.2019	
CHKD.	P.G	Pradhip G
DT.	08.05.2019	
DRN.	N.S	Nikhil S
DT.	08.05.2019	

